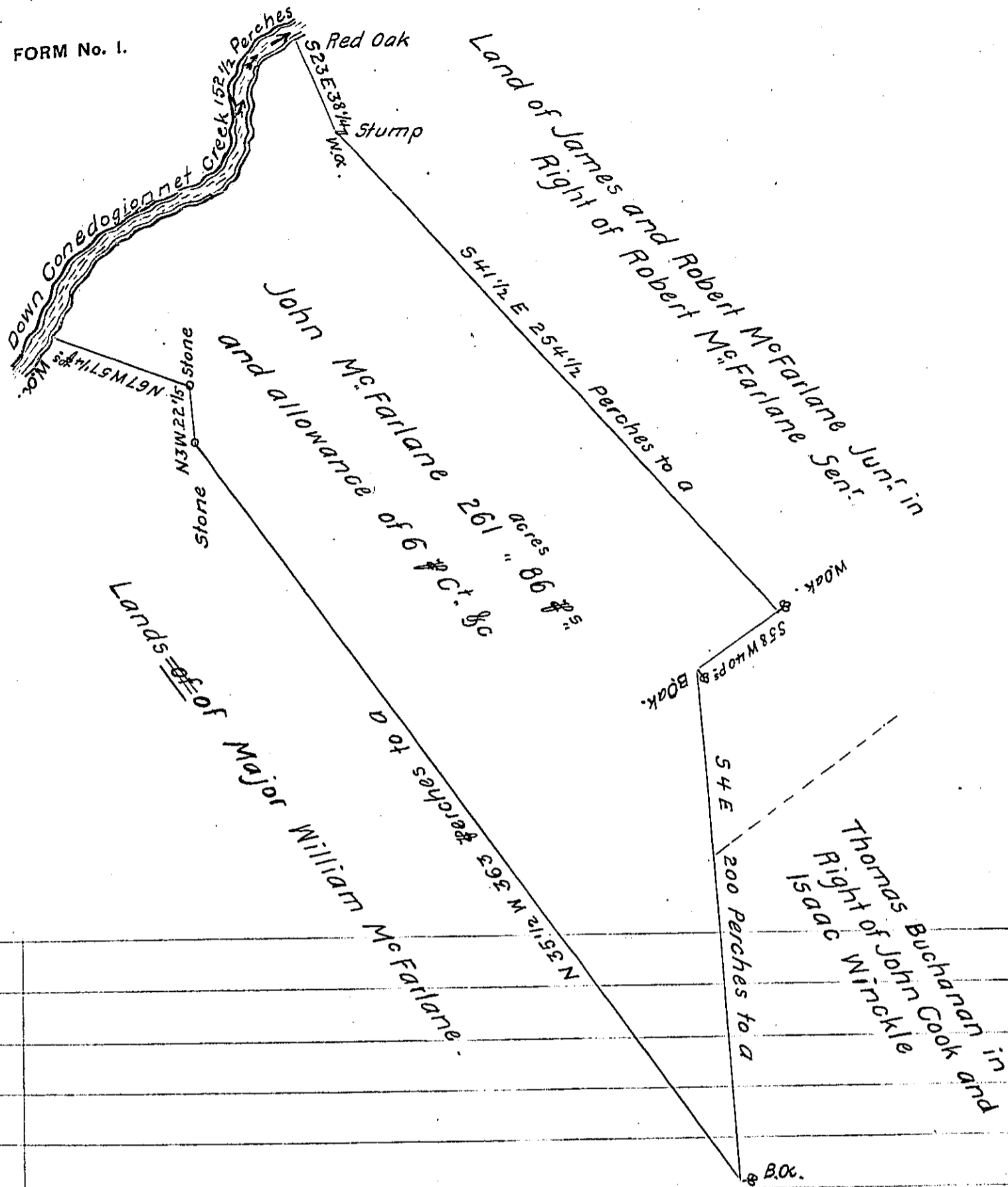


FORM No. 1.



A Draught of a Tract of land situate in Pennsborough Township in the County of Cumberland, containing Two Hundred and Sixty One Acres and Eighty six Perches and allowance of 6 1/2 Cent for Roads &c, Surveyed March 10th 1790 for John McFarlane In Pursuance of a Warrant dated the 12th day of February One thousand Seven Hundred and Ninety 1790.

To Daniel Brodhead Esq. } Per Saml Lyon D.S.
 Surveyor General. }

IN TESTIMONY that the above is a copy of the original remaining on file in the Department of Internal Affairs of Pennsylvania, made conformably to an Act of Assembly approved the 16th day of February, 1833, I have hereunto set my Hand and caused the Seal of said Department to be affixed at Harrisburg, this twenty-fourth day of December 1905

Isaac D. Brown
 Secretary of Internal Affairs.